

**MODEL 7H820  
CHASSIS 7E01**

ALL VOLTAGE MEASURED FROM COMMON RETURN TO POINTS INDICATED WITH AN A.C., D.C. OR VACUUM TUBE VOLTMETER

ALL VOLTAGES ARE D.C. UNLESS OTHERWISE SPECIFIED

ALL RESISTORS ±20% TOLERANCE UNLESS OTHERWISE SPECIFIED

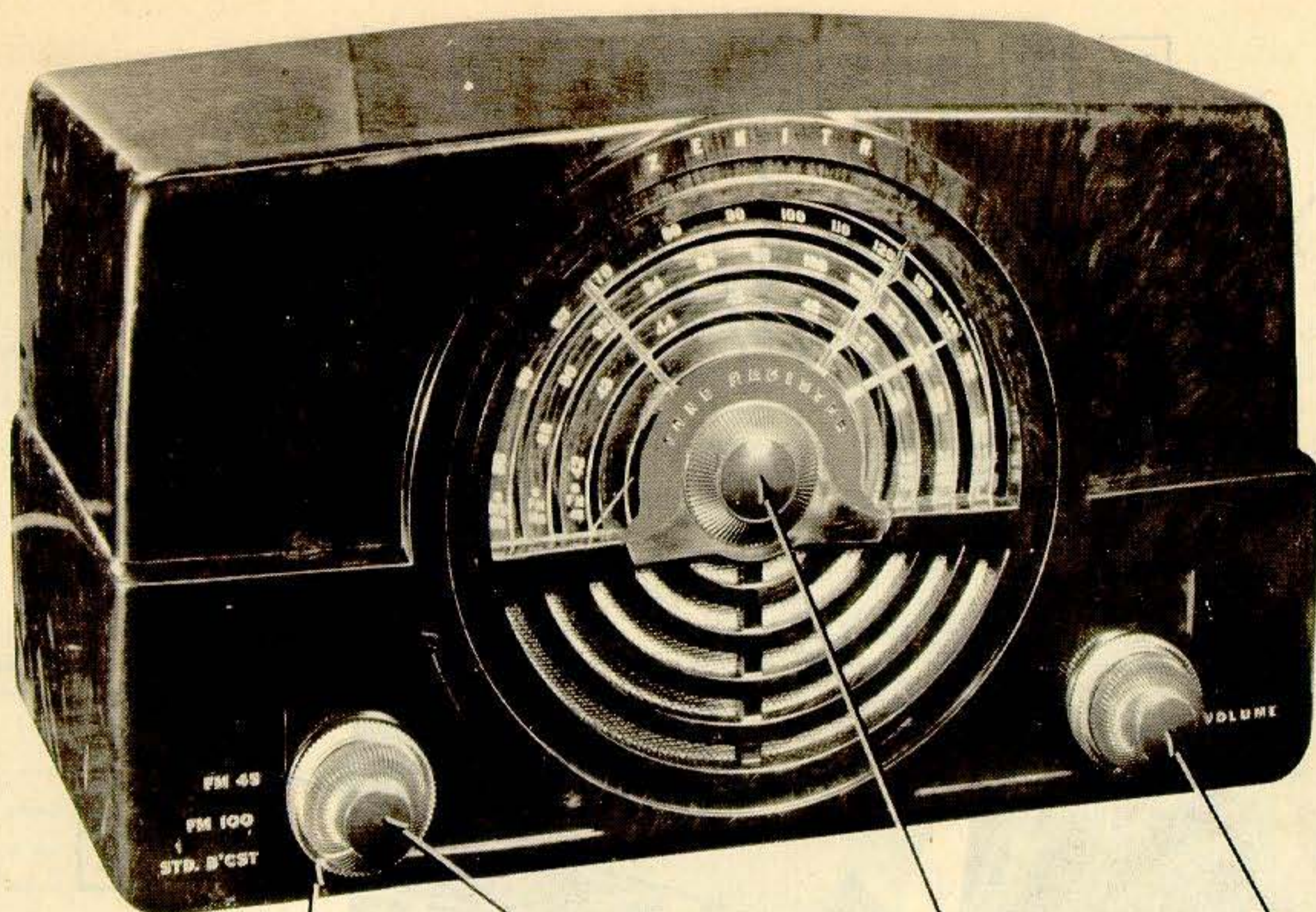
AMP MOD. I.F. FREQUENCY 455 K.C.  
FREQ. MOD. I.F. FREQUENCY 10.7 M.C.

**TUNING RANGES**  
540-1620 K.C. STD. B.C.  
88-108 M.C. F.M. 100  
42-48.5 M.C. F.M. 45

DENOTES CHASSIS



ZENITH MODEL 7H820,  
7H820W (Ch. 7E01)



TUNING CONTROL

BAND SWITCH

TONE CONTROL

VOLUME CONTROL  
ON-OFF SWITCH

ZENITH MODEL 7H820,  
7H820W (Ch. 7E01)

ZENITH MODEL 7H820

|                        |  |            |                         |
|------------------------|--|------------|-------------------------|
| TRADE NAME             | Zenith, Model 7H820, 7H820W (Ch. 7E01)   |            |                         |
| MANUFACTURER           | Zenith Radio Corp., 6001 Dickens Ave., Chicago 39, Ill.  |            |                         |
| TYPE SET               | AC-DC Operated AM - 2 Band FM Superheterodyne Receiver with Loop Antenna   |            |                         |
| TUBES (SEVEN)          | Types, 12BA6 RF Amp., 12BE6 Converter, 12BA6 1st IF Amp., 12BA6 2nd IF Amp., 12AU6 Limiter, 19T8 Disc.-Det.-AVC-AF, 35B5 Power Output. |            |                         |
| POWER SUPPLY           | 110-120 Volts AC-DC  | RATING     | .42 Amp. @ 117 Volts AC |
| TUNING RANGE-BROADCAST | 540-1620KC   | FREQ. MOD. | 42-48.5MC, 88-108MC     |

HOWARD W. SAMS & CO., INC. • 2924 East Washington Street • Indianapolis 7, Indiana

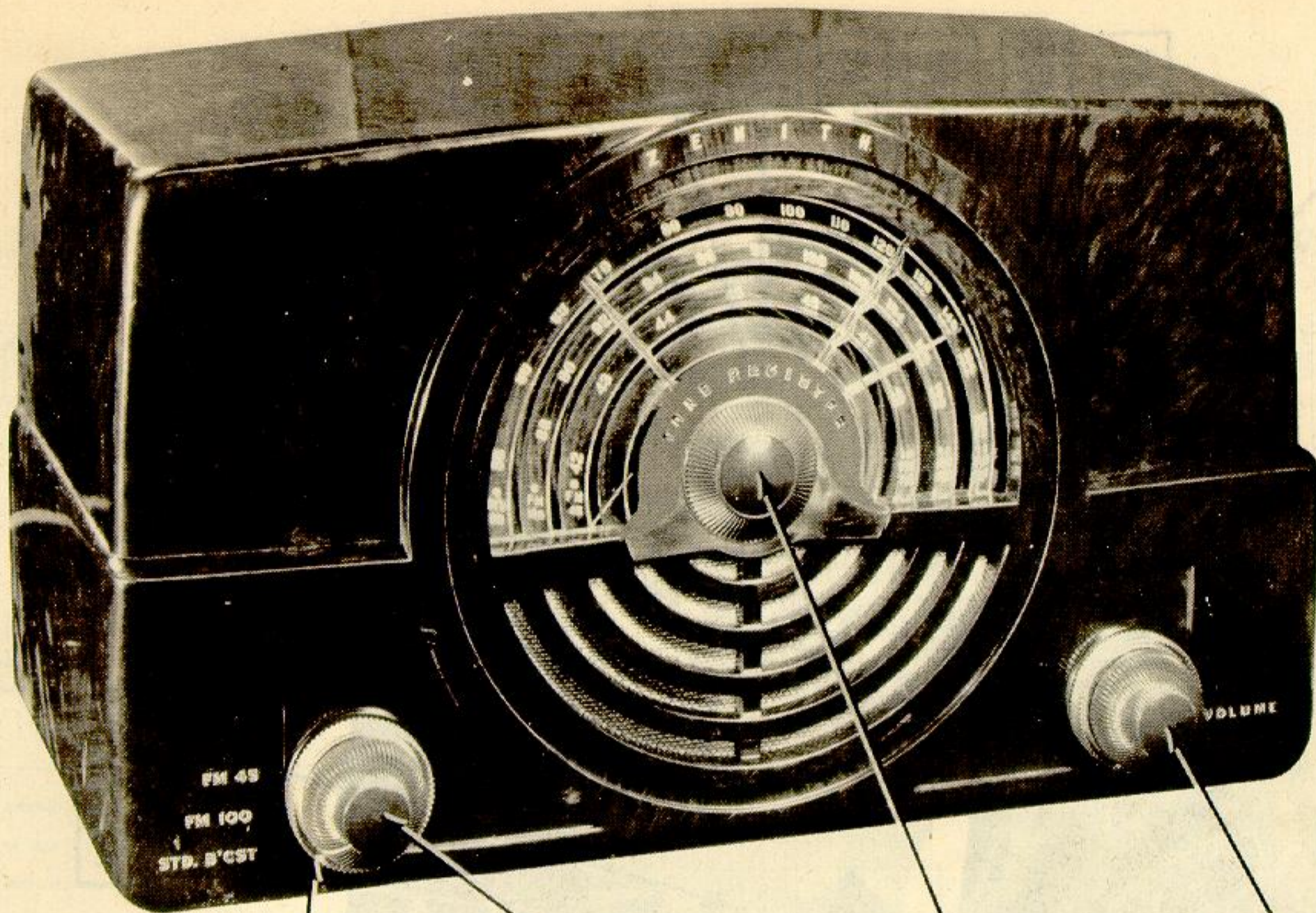
"The listing of any available replacement part herein does not constitute in any case a recommendation, warranty or guaranty by Howard W. Sams & Co., Inc., as to the quality and suitability of such replacement part. The numbers of these parts have been compiled from information furnished to Howard W. Sams & Co., Inc., by the manufacturers of the particular type of replacement part listed."  
"Reproduction or use, without express permission, of editorial or pictorial con-

tent, in any manner, is prohibited. No patent liability is assumed with respect to the use of the information contained herein. Copyright 1948 by Howard W. Sams & Co., Inc., Indianapolis, Indiana, U. S. A. Copyright under International Copyright Union. All rights reserved under Inter-American Copyright Union (1910) by Howard W. Sams & Co., Inc." Printed in U. S. of America

DATE 8/48-#4813-24 SET #4813-24



ZENITH MODEL 7H820,  
7H820W (Ch. 7E01)



TUNING CONTROL

BAND SWITCH

TONE CONTROL

VOLUME CONTROL  
ON-OFF SWITCH

ZENITH MODEL 7H820,  
7H820W (Ch. 7E01)

ZENITH MODEL 7H820

|                        |  |            |                         |
|------------------------|--|------------|-------------------------|
| TRADE NAME             | Zenith, Model 7H820, 7H820W (Ch. 7E01)   |            |                         |
| MANUFACTURER           | Zenith Radio Corp., 6001 Dickens Ave., Chicago 39, Ill.  |            |                         |
| TYPE SET               | AC-DC Operated AM - 2 Band FM Superheterodyne Receiver with Loop Antenna   |            |                         |
| TUBES (SEVEN)          | Types, 12BA6 RF Amp., 12BE6 Converter, 12BA6 1st IF Amp., 12BA6 2nd IF Amp., 12AU6 Limiter, 19T8 Disc.-Det.-AVC-AF, 35B5 Power Output. |            |                         |
| POWER SUPPLY           | 110-120 Volts AC-DC  | RATING     | .42 Amp. @ 117 Volts AC |
| TUNING RANGE-BROADCAST | 540-1620KC   | FREQ. MOD. | 42-48.5MC, 88-108MC     |

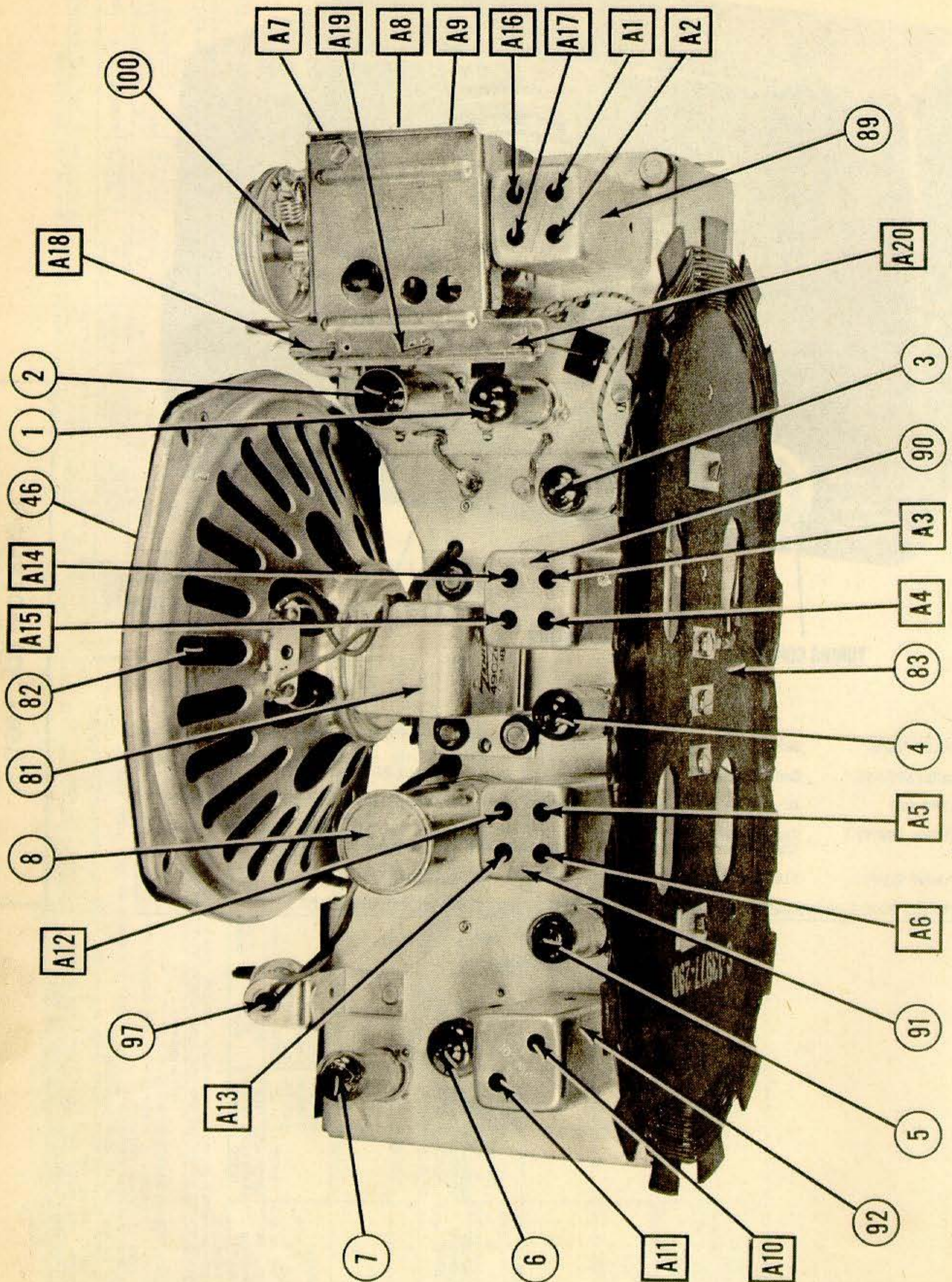
HOWARD W. SAMS & CO., INC. • 2924 East Washington Street • Indianapolis 7, Indiana

"The listing of any available replacement part herein does not constitute in any case a recommendation, warranty or guaranty by Howard W. Sams & Co., Inc., as to the quality and suitability of such replacement part. The numbers of these parts have been compiled from information furnished to Howard W. Sams & Co., Inc., by the manufacturers of the particular type of replacement part listed."  
"Reproduction or use, without express permission, of editorial or pictorial con-

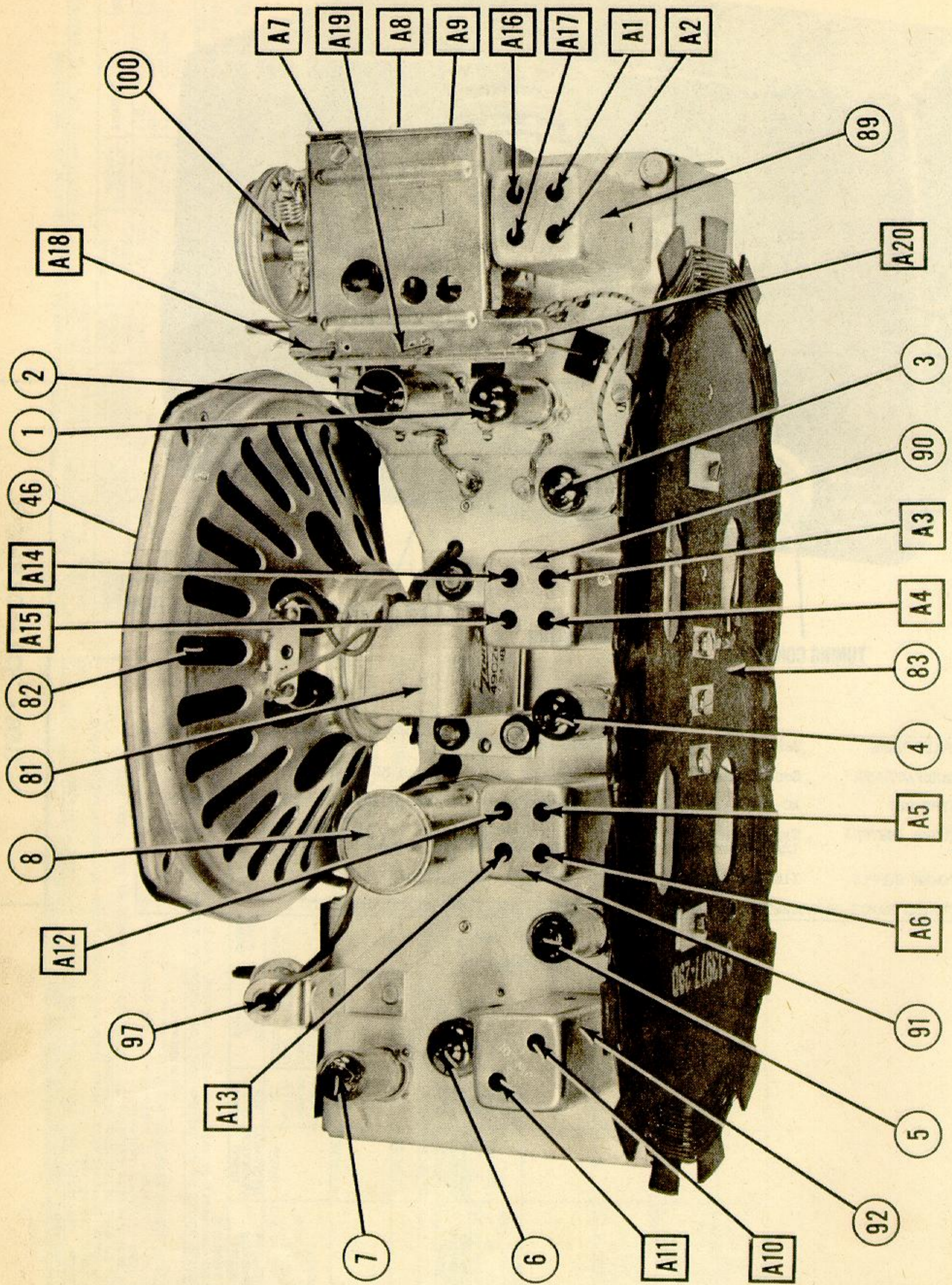
tent, in any manner, is prohibited. No patent liability is assumed with respect to the use of the information contained herein. Copyright 1948 by Howard W. Sams & Co., Inc., Indianapolis, Indiana, U. S. A. Copyright under International Copyright Union. All rights reserved under Inter-American Copyright Union (1910) by Howard W. Sams & Co., Inc." Printed in U. S. of America

DATE 8/48-#4813-24 SET #4813-24

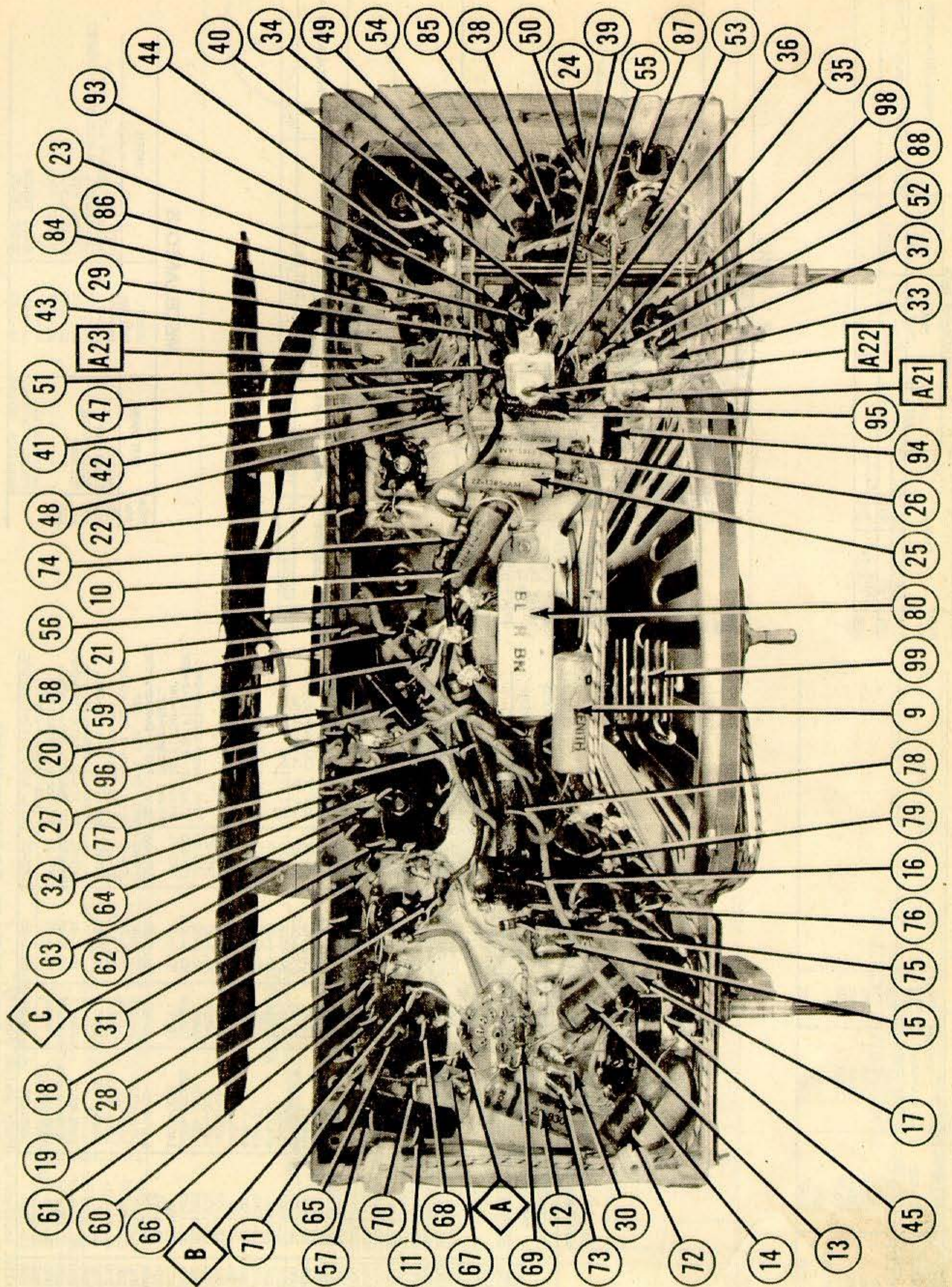




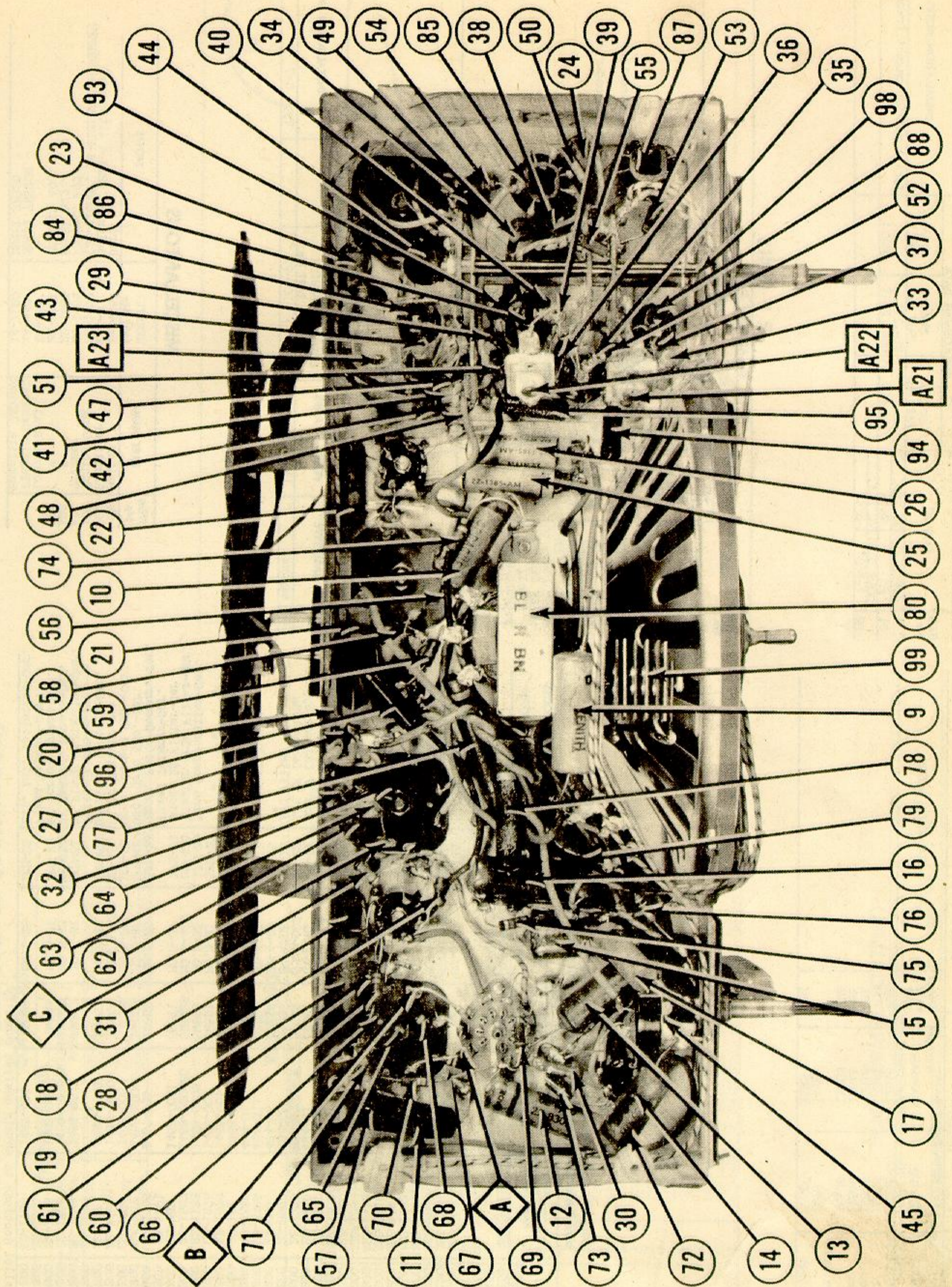














## ALIGNMENT PROCEDURE

| Operation | Connect Oscillator to                       | Dummy Antenna | Input Signal Frequency | Band      | Set Dial To | Adj. Trimmers                                       | Purpose   |
|-----------|---|---------------|------------------------|-----------|-------------|---|---|
| 1         | Pin 7 12BE6 Converter                       | .05 Mfd.      | 455 Kc. Modulated      | BC        | 600 Kc.     | L-11, 12, 15, 16, 19 and 20                         | Align I. F. channel for maximum output.             |
| 2         | 2 turns loosely cpld. to wavemagnet         |               | 1600 Kc. Modulated     | BC        | 1600 Kc.    | C12   | Set oscillator to dial scale.                       |
| 3         | 2 turns loosely cpld. cpld. to wavemagnet   |               | 1400 Kc. Modulated     | BC        | 1400 Kc.    | C11 and C2  | Align det. and ant. stages.                         |
| 4 (a)     | Pin 1 (grid) on 12AU6 limiter.              | .05 Mfd.      | 10.7 Mc. Unmodulated   | FM<br>45  |             | L21 coil slug<br>Primary discr.                     | Align primary of discriminator for maximum reading. |
| 5 (b)     | Pin 1 (grid) on 12AU6 limiter.              | .05 Mfd.      | 10.7 Mc. Unmodulated   | FM<br>45  |             | L22 coil slug<br>sec. of discr.                     | Adjust secondary of discriminator for zero reading. |
| 6 (c)     | Pin 1 (grid) on 12BA6 2nd IF.               | .05 Mfd.      | 10.7 Mc. Unmodulated   | FM<br>45  |             | L17 and L18 Prim.<br>and Sec. of 3rd IF trans.      | Align 3rd IF transformer for maximum reading.       |
| 7 (c)     | Pin 1 (grid) on 12BA6 1st IF.               | .05 Mfd.      | 10.7 Mc. Unmodulated   | FM<br>45  |             | L13 and L14 Prim.<br>and Sec. of 2nd IF transformer | Align 2nd IF transformer for maximum reading.       |
| 8 (c)     | Pin 7 (grid) on 12BE6 converter tube socket | .05 Mfd.      | 10.7 Mc. Unmodulated   | FM<br>45  |             | L9 and L10 Prim.<br>and Sec. of 1st IF transformer  | Align 1st IF transformer for maximum reading.       |
| 9 (c)(d)  | Antenna Post F (Remove line ant.)           | 270 ohms      | 98 Mc. Unmodulated     | FM<br>100 | 98 Mc.      | L6 Osc. Coil Slug                                   | Set Oscillator to dial scale.                       |
| 10 (c)(d) |   | 270 ohms      | 98 Mc. Unmodulated     | FM<br>100 | 98 Mc.      | L3 and L2 Det.<br>and RF coil Slugs                 | Align det. and ant. stages to maximum reading.      |
| 11 (c)    |   | 270 ohms      | 45 Mc. Unmodulated     | FM<br>45  | 45 Mc.      | C17   | Set oscillator to dial scale.                       |
| 12 (c)    |   | 270 ohms      | 45 Mc. Unmodulated     | FM<br>45  | 45 Mc.      | C5 Det., C5 Ant.                                    | Align detector and ant. stages for maximum reading. |

### IMPORTANT

Alignment of this chassis will in most cases be unnecessary unless an IF or RF transformer is replaced or the adjustments have been tampered with.

Correct alignment can only be made if the following procedure is followed:

A vacuum tube voltmeter with an isolation resistor of 200,000 ohms in series with the hot lead will serve for FM adjustments. This lead should be shielded.

An AC output meter connected across the primary or secondary of the output transformer will be satisfactory for all AM adjustments.

The signal generator output should be kept just high enough to get an indication on the meter.

(a) Vacuum Tube Voltmeter Lug 6 on discriminator transformer to chassis (half discriminator load).

(b) Vacuum Tube Voltmeter Lug 3 on discriminator transformer to chassis (full discriminator load).

(c) Vacuum Tube Voltmeter Lug 3 on 3rd IF transformer (Limiter Grid).

(d) Loosen Slugs by applying a hot iron to the cement.



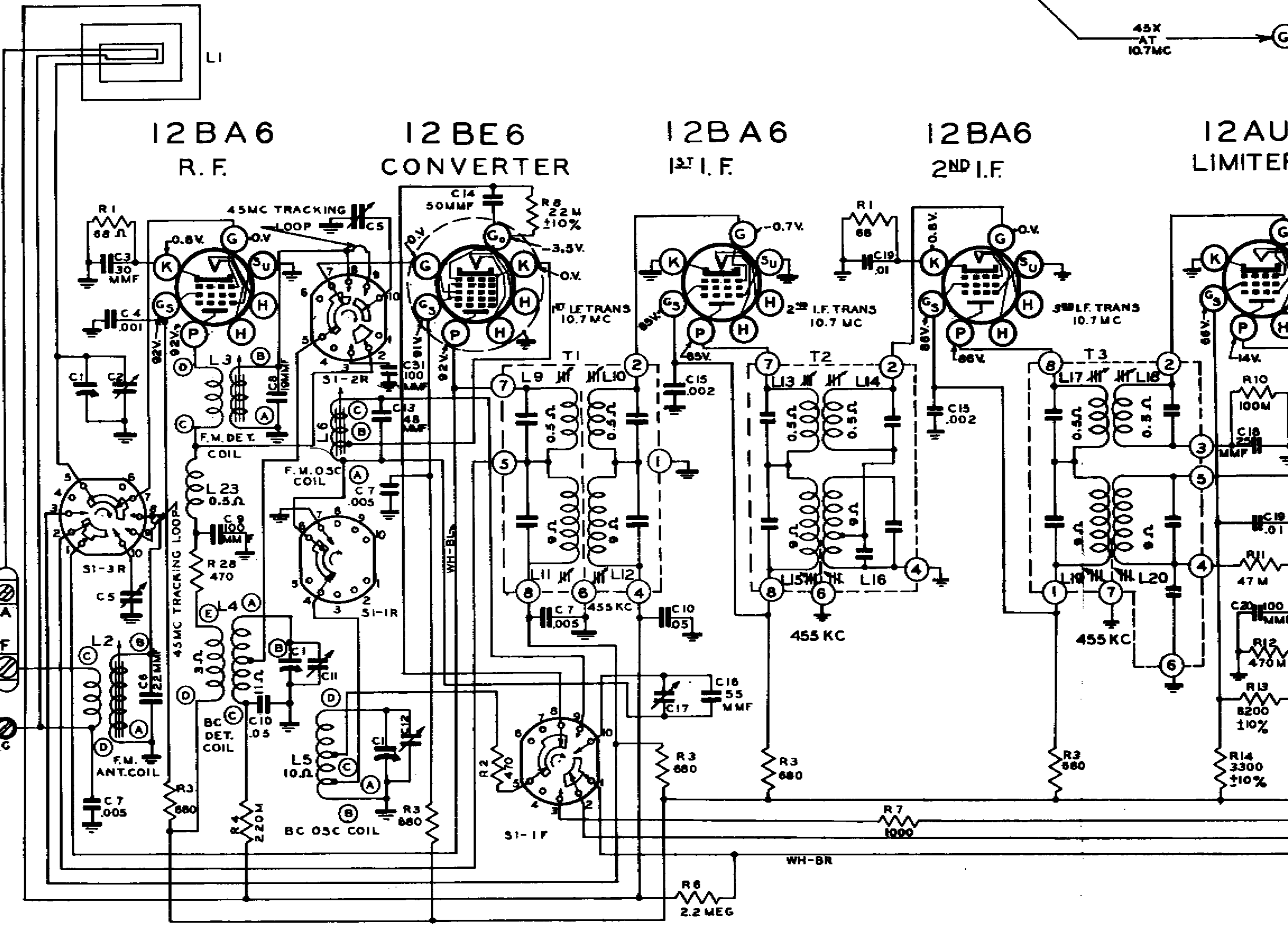
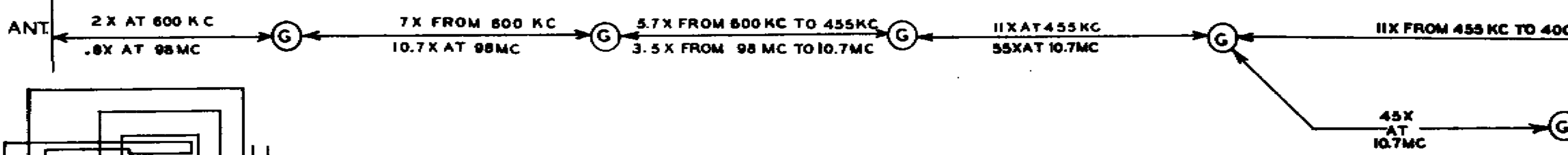
**MODEL 7H820  
CHASSIS 7E01**

**PARTS LIST**

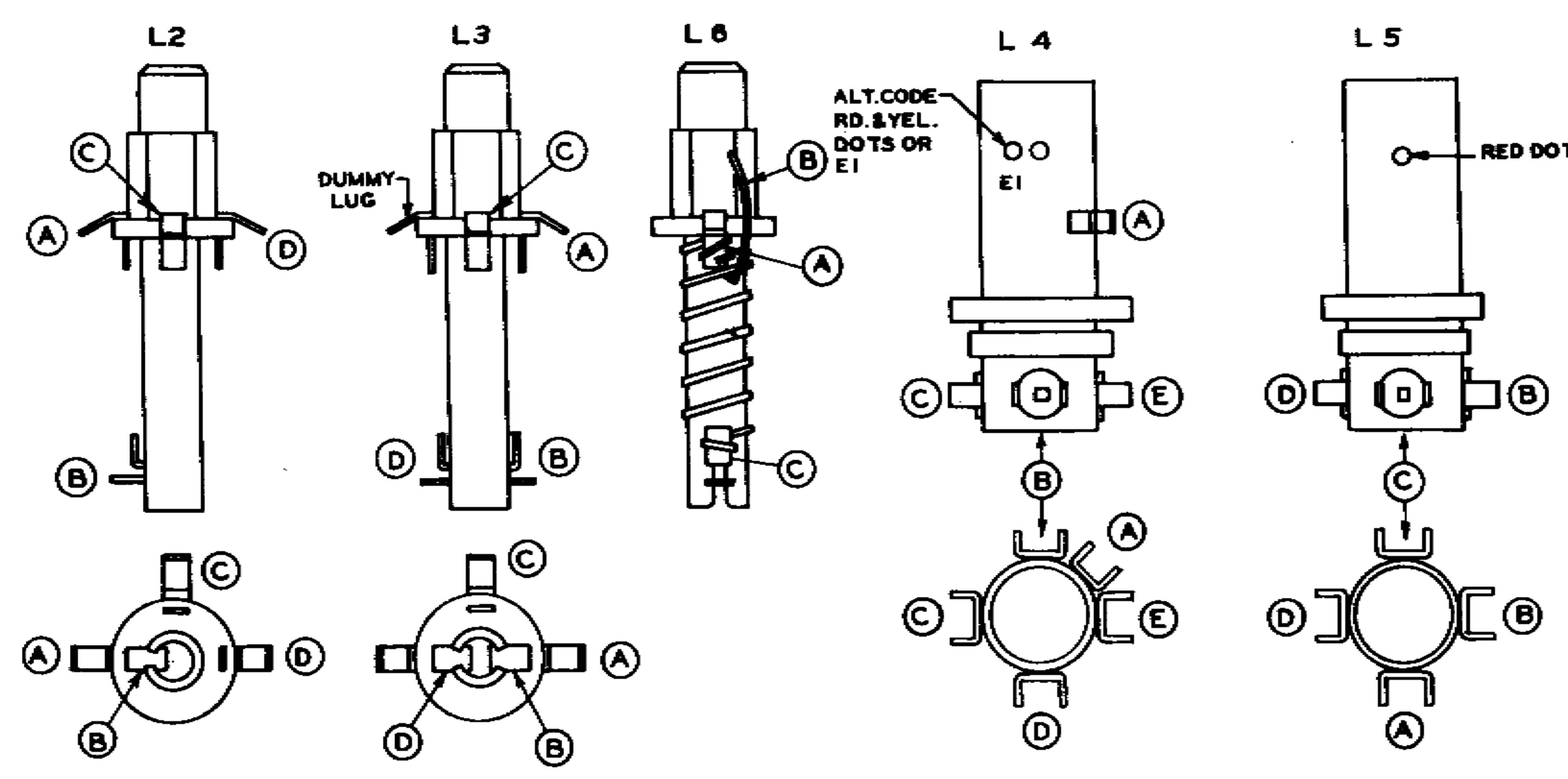
| PART NO.                | REF. NO. | DESCRIPTION   | PART NO.          | REF. NO.              | DESCRIPTION   |
|-------------------------|----------|---|-------------------|-----------------------|---|
| <b>DIAL ASSEMBLY</b>    |          |   | <b>CONDENSERS</b> |                       |   |
| 12-1407                 |          | Dial Light Socket Mounting Bracket. . . . .                 | 22-162            | C31                   | 100 Mmfd. (or 22-1669) . . . . . 500 V.                             |
| 26-389                  |          | Louvre Dial . . . . .                                       | 22-365            | C20                   | 100 Mmfd. (or 22-1701) . . . . . 500 V.                             |
| 46-538                  |          | Tuning Control Knob . . . . .                               | 22-829            | C10                   | .05 Mfd. . . . . 200 V.   |
| 46-688                  |          | Tone Control Knob . . . . .                                 | 22-830            | C22                   | .02 Mfd. . . . . 600 V.   |
| 46-718                  |          | Band Switch Knob. . . . .                                   | 22-1017           | C30                   | .05 Mfd. . . . . 400 V.   |
| 54-211                  |          | Speed Nut (Dial Scale Mtg.) . . . . .                       | 22-1138           | C23                   | 500 Mmfd. (or 22-1703) . . . . . 500 V.                             |
| 57-1335                 |          | Tone Knob Escutcheon. . . . .                               | 22-1220           | C15                   | .002 Mfd. . . . . 600 V.  |
| 76-493                  |          | Tuning Shaft. . . . .                                       | 22-1367           | C14                   | 50 Mmfd. . . . . 500 V.   |
| 78-786                  |          | Dial Light Socket . . . . .                                 | 22-1385           | C19                   | .01 Mfd. . . . . 200 V.   |
| 80-69                   |          | Dial Cord Spring. . . . .                                   | 22-1418           | C25                   | .1 Mfd. . . . . 200 V.  |
| 80-209                  |          | Dial Cord Spring. . . . .                                   | 22-1506           | C6                    | 22 Mmfd. (Ceramic) . . . . . 500 V.                                 |
| 80-444                  |          | Tuner Arm Tension Spring. . . . .                           | 22-1507           | C18                   | 25 Mmfd. (Ceramic) . . . . . 500 V.                                 |
| 80-580                  |          | Tuner Arm Stop Spring . . . . .                             | 22-1661           | C26, C27,<br>C28, C29 | Dry Electrolytic 80-40-40 Mfd. 150 V. X 40<br>Mfd. - 25 V . . . . . |
| 80-581                  |          | Tuner Arm Pressure Spring . . . . .                         | 22-1669           | C9                    | 100 Mmfd. (Ceramic) . . . . . 500 V.                                |
| 83-1504                 |          | Dial Light Shield . . . . .                                 | 22-1676           | C4                    | .001 Mfd. (Ceramic) . . . . . 500 V.                                |
| 93-475                  |          | Felt Washer . . . . .                                       | 22-1677           | C1                    | Three Gang Variable. . . . .  |
| 94-371                  |          | Pointer Pulley Bushing (S13944) . . . . .                   | 22-1683           | C21                   | .02 Mfd. (Shielded) . . . . . 400 V.                                |
| 97-284                  |          | Dial Cord Guide Stud. . . . .                               | 22-1685           | C5                    | Single Section Trimmer . . . . .                                    |
| 100-97                  |          | Dial Light Bulb - 115 V. - 10 W. . . . .                    | 22-1686           | C17                   | Single Section Trimmer . . . . .                                    |
| 188-30                  |          | Retaining Ring (76-493) . . . . .                           | 22-1688           | C8                    | 19 Mmfd. (Ceramic) . . . . . 500 V.                                 |
| 188-102                 |          | Clamping Ring (46-538). . . . .                             | 22-1689           | C13                   | 48 Mmfd. (Ceramic) . . . . . 500 V.                                 |
| S-13944                 |          | Pointer Pulley and Bushing Assembly (59-205). . . . .       | 22-1691           | C16                   | 55 Mmfd. (Silver on Ceramic) . . . . .                              |
| S-13945                 |          | Cam, Pulley and Bushing Assembly. . . . .                   | 22-1702           | C24                   | .005 Mfd. . . . . 400 V.  |
| S-13981                 |          | Tone Control Mtg. Bracket and Lug Assem. (12-1404). . . . . | 22-1705           | C2                    | 30 Mmfd. (Ceramic) . . . . . 500 V.                                 |
| S-13982                 |          | Dial Cord and Eyelet Assembly (Short) . . . . .             | 22-1706           | C7                    | .005 Mfd. (Ceramic) (Disc Type) . . . . . 450 V.                    |
| S-13983                 |          | Dial Cord and Eyelet Assembly (Long). . . . .               |                   |                       |   |
| S-14129                 |          | Volume Control Knob Assembly (46-522-697) . . . . .         |                   |                       |   |
| S-14429                 |          | Tuner Arm Assembly. . . . .                                 |                   |                       |   |
| <b>COILS AND CHOKES</b> |          |   |                   |                       | <b>RESISTORS</b>  |
| S-11157                 | L5       | Broadcast Oscillator Coil Assembly. . . . .                 | 63-1202           | R22                   | 330 Ohm (Wirewound) . . . . . .2 W.                                 |
| S-12256                 | L7       | A.C. Line Choke Coil Assembly . . . . .                     | 63-1450           | R21                   | 22 Ohm (Wirewound) . . . . . .1 W.                                  |
| S-12259                 | L6       | F.M. Oscillator Coil Assembly . . . . .                     | 63-1452           | R23                   | 270 Ohm (Wirewound) . . . . . .2 W.                                 |
| S-13871                 | L3       | F.M. Detector Coil Assembly . . . . .                       | 63-1582           | R26                   | 50M Ohm Tone Control . . . . .                                      |
| S-13970                 | T1       | 1st I.F. Transformer Assembly . . . . .                     | 63-1584           | R20                   | Volume Control and Switch. . . . .                                  |
| S-13971                 | T2       | 2nd I.F. Transformer Assembly . . . . .                     | 63-1737           | R1                    | 68 Ohm (Insulated) . . . . . 1/2 W.                                 |
| S-13972                 | T3       | 3rd I.F. Transformer Assembly . . . . .                     | 63-1747           | R27                   | 120 Ohm (Insulated) . . . . . 1/2 W.                                |
| S-13973                 | T4       | Discriminator Transformer Assembly. . . . .                 | 63-1772           | R2                    | 470 Ohm (Insulated) . . . . . 1/2 W.                                |
| S-13974                 | L4       | Broadcast Detector Coil Assembly. . . . .                   | 63-1779           | R3                    | 680 Ohm (Insulated) . . . . . 1/2 W.                                |
| S-13997                 | L8       | Filament Choke Coil Assembly. . . . .                       | 63-1765           | R19                   | 1M Ohm (Insulated) . . . . . 1/2 W.                                 |
| S-14126                 | L23      | R.F. Choke Coil Assembly. . . . .                           | 63-1786           | R7                    | 1000 Ohm (Insulated) . . . . . 1/2 W.                               |
| S-14192                 | L2       | F.M. Antenna Coil Assembly. . . . .                         | 63-1799           | R25                   | 2200 Ohm (Insulated) . . . . . 1/2 W.                               |
|                         |          |   | 63-1806           | R14                   | 3300 Ohm (Insulated) . . . . . 1/2 W.                               |
|                         |          |   | 63-1810           | R15                   | 3900 Ohm (Insulated) . . . . . 1/2 W.                               |

82





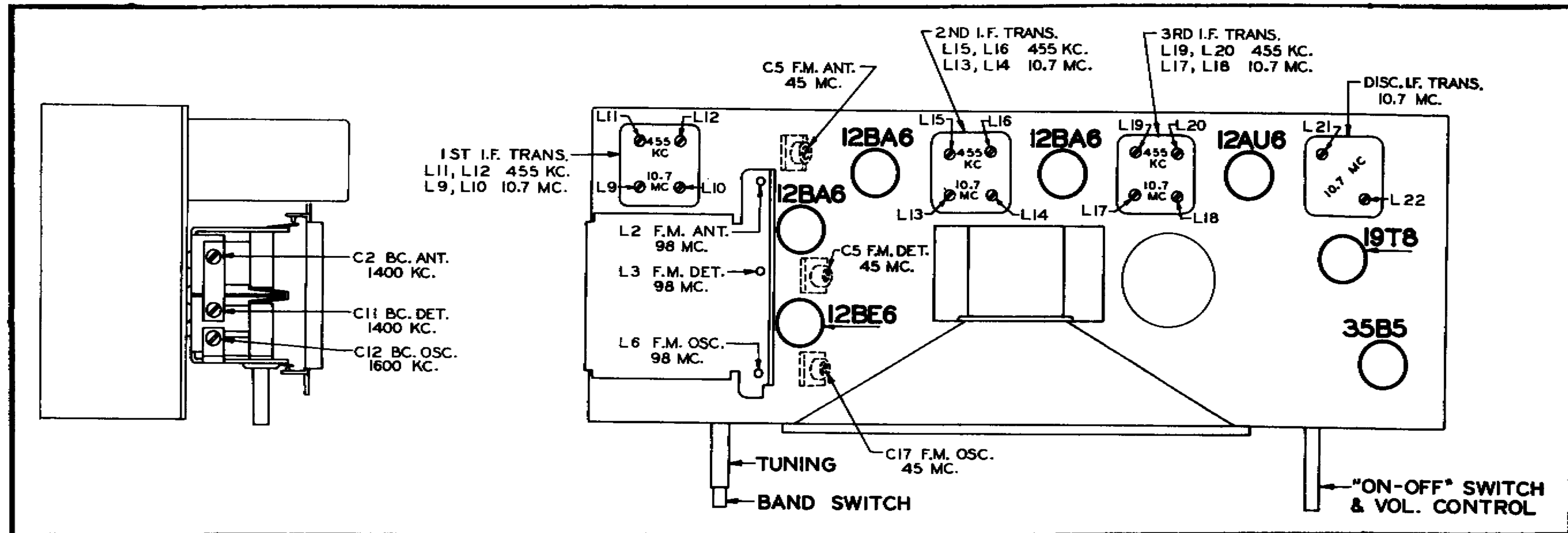
BAND SWITCH S1 SHOWN IN STANDARD BROADCAST POSITION  
 BANDSWITCH POSITIONS  
 1<sup>ST</sup> POS. - STD. BROADCAST  
 2<sup>ND</sup> POS. - FM. 100 MC.  
 3<sup>RD</sup> POS. - FM. 45 MC



ALL V.  
 RETUF  
 A.C. D.  
 ALL V.  
 OTHE  
 ALL I  
 UNLE  
 GND



**MODEL 7H820  
CHASSIS 7E01**



**TUBE AND TRIMMER LOCATION**

**TO THE SERVICE MAN:**

The 7E01 chassis incorporates a superheterodyne circuit with two stages of IF, and one stage of RF amplification on all bands.

When adjustments are made on the 7E01 or any AC-DC chassis, a line isolation transformer (110 V input to 110 V output) is recommended in order to avoid a "hot" chassis. If an isolation transformer is not available, check the AC voltage between chassis and bench ground, and if there is any indication of voltage, reverse the plug before handling the set.

**AM Alignment:** The alignment of this chassis on the standard broadcast band is conventional. The alignment slugs in the IF transformers are threaded and screw into the coil forms. The slugs are slotted for a small size fiber screw driver. Do not press hard on the aligning tool or the threads in the coil forms will strip and adjustment will be impossible.

**FM RF Alignment:** The same coil slug arrangement which tunes the 100 MC FM band also tunes the 45 MC band. However, on 45 MC the band switch connects trimmer condensers in parallel and padding wires in series with the 100 MC coils. The tuning slugs are attached to threaded shafts and the slugs are varied in the field of the coils by turning the shafts clockwise or counter-clockwise. After adjustment the shafts must be secured with a drop of speaker cement.

**FM IF Alignment:** The same type of tuning slugs for aligning the AM IF Amplifier are used for the FM I.F.'s. Observe the same precautions when making adjustments.

**FM Discriminator Alignment:** When the secondary of the discriminator is aligned (operation 5) use sufficient signal input to get a good positive and negative indication before setting the slug for zero reading. A center zero indicating meter is recommended for this adjustment, but is not absolutely necessary. Reversing the leads of a non-zero center meter, or observing closely when the meter starts to go to the left (negative) of zero will give the same results.

The tone control is of the low impedance type in which a portion of the audio voltage is taken from the voice coil and fed back into the grid of the first audio. The voltage is fed back out of phase. R25, 26 and C25 determine the characteristic of the feed back voltage. A much greater variation of tone can be had by this system.

The filter circuits of chassis 7E01 incorporate new features. An examination of the schematic drawing will show the output transformer tapped slightly off center. This tap is the B+ connection from filter capacitor C26 off the selenium rectifier to the 35B5 plate. The lower connection of the output transformer feeds B+ to the rest of the tubes in the receiver. Current flowing through the upper windings of the output transformer to the 35B5 produces a magnetic field which is 180° out of phase with the magnetic field produced by current flowing in the opposite direction through the output transformer to the rest of the receiver, therefore, most of the AC hum is cancelled. Further reduction of hum is accomplished by filtering through resistors R22 and R23 capacitors C27 and C28.

This development in filtering systems allows a higher effective plate voltage on the 35B5 for increased power output.

**NOTE:** The output transformer must be replaced with an exact duplicate, Part No. 95-1035 be sure to add the speaker code letter to the transformer Part Number when ordering replacements.



## PARTS LIST--Continued

| PART NO.                    | REF. NO. | DESCRIPTION  | PART NO. | REF. NO. | DESCRIPTION  |
|-----------------------------|----------|--|----------|----------|--|
| <b>RESISTORS--Continued</b> |          |  |          |          |  |
| 63-1871                     | R29      | 5600 Ohm (Insulated) . . . . .                               | 93-125   |          | #6 Internal Shakeproof Lockwasher #1206. . . . .             |
| 63-1824                     | R13      | 8200 Ohm (Insulated) . . . . .                               | 93-126   |          | #8 Internal Shakeproof Lockwasher #1208. . . . .             |
| 63-1841                     | R8       | 22M Ohm (Insulated) . . . . .                                | 93-665   |          | Fibre Washer . . . . .                                       |
| 63-1856                     | R11      | 47M Ohm (Insulated) . . . . .                                | 93-735   |          | .012 x .093 x 11/64" Steel Washer - Cadmium. . . . .         |
| 63-1870                     | R10      | 100M Ohm (Insulated) . . . . .                               | 93-889   |          | Insulating Washer. . . . .                                   |
| 63-1876                     | R16      | 150M Ohm (Insulated) . . . . .                               | 94-334   |          | Speaker Mtg. Bushing . . . . .                               |
| 63-1884                     | R4       | 220M Ohm (Insulated) . . . . .                               | 94-485   |          | Fibre Bushing. . . . .                                       |
| 63-1898                     | R12      | 470M Ohm (Insulated) . . . . .                               | 94-598   |          | R.F. Plate Mtg. Bushing. . . . .                             |
| 63-1926                     | R6       | 2.2 Megohm (Insulated) . . . . .                             | 95-1035  |          | Output Transformer . . . . .                                 |
| 63-1940                     | R17      | 4.7 Megohm (Insulated) . . . . .                             | 97-293   |          | Insulating Stud (Chassis Mtg. Stud) (4 used) . . . . .       |
| <b>MISCELLANEOUS</b>        |          |  |          |          |  |
| 12-1070                     |          | Wavemagnet Mounting Bracket. . . . .                         | 102-466  |          | Dial Calibration Label . . . . .                             |
| 14-848                      |          | Model 820W - Plastic Cabinet (7H820W). . . . .               | 110-130  |          | Grille Cloth . . . . .                                       |
| 14-1020                     |          | Model 820 - Bakelite Cabinet (7H820) . . . . .               | 112-281  |          | #10 x 3/4" Oval Binding Hd. Self Tapping Screw Type          |
| 19-139                      |          | Cabinet Back Retaining Clip (4 used) . . . . .               |          |          | Z - Stat. Bronze . . . . .                                   |
| 49-608                      |          | 7/2" P. M. Speaker 208-608 and Voice Coil . . . . .          | 114-26   |          | #8 x 1/4" Hex Hd. Self Tapping Screw - Type Z - Cad.         |
| 54-30                       |          | #8-32 x 5/16" x 7/64" Hex Nut - Steel N.P. (6 used).         | 114-48   |          | #6-32 x 1/4" Hex Acorn Hd. M.S., Steel N.P. (9 used)         |
| 54-139                      |          | #3/8-32 x 9/16" Palnut - Type 9N-Steel-Cad. (2 used)         | 114-78   |          | #8 x 5/16" Hex Hd. Slotted Self Tapping Screw                |
| 54-226                      |          | Speed Nut - Tinnerman #C518B-014-27 (3 used) . . . . .       |          |          | (Wavemagnet Mtg.) . . . . .                                  |
| 57-1269                     |          | I.F. Transformer Terminal Plate. . . . .                     | 114-92   |          | #6 x 1-1/8" Hex Hd. Slotted Self Tapping Screw Type          |
| 58-168                      |          | Two Prong Plug . . . . .                                     |          |          | Z - Cad. . . . .   |
| 73-30                       |          | #6-32 x 1/4" Hex Hd. Set Screw - Cuppoint (2 used) . . . . . | 114-157  |          | #6 x 1/2" Hex Hd. Self Tapping Screw - Stan-Tap. Cad         |
| 78-782                      |          | Socket - Miniature Tube (7 Contact) (2 used) . . . . .       | 114-218  |          | #10 x 7/8" Slotted Washer Hd. Self Tapping Screw             |
| 78-788                      |          | Socket - Miniature Tube (9 Contact) . . . . .                |          |          | (Chassis Mtg.) . . . . .                                     |
| 78-794                      |          | Socket - Miniature Tube (7 Contact) (3 used) . . . . .       | 114-291  |          | #8-32 x 7/16" Hex Hd, Slotted M. Screw - Steel, N.P.         |
| 78-795                      |          | Socket - Miniature Tube (7 Contact) . . . . .                | 114-292  |          | #6 x 5/8" Hex Hd. Slotted Self Tapping Screw Stan-           |
| 83-1063                     |          | Threaded Insert (used on all I.F. Transformers). . . . .     |          |          | Tap. - Cad. . . . .  |
| 83-1064                     |          | Threaded Insert (used on all I.F. and Discriminator          | 125-17   |          | Rubber Grommet (4 used) (49-608) . . . . .                   |
|                             |          | Transformers). . . . .                                       | 125-62   |          | Rubber Grommet (Used on R.F. Plate) (4 used) . . . . .       |
| 83-1090                     |          | Insulating Strip (58-168). . . . .                           | 126-554  |          | Miniature Tube Shield. . . . .                               |
| 83-1479                     |          | Insulating Strip . . . . .                                   | 139-69   |          | Speaker Baffle . . . . .                                     |
| 83-1480                     |          | Insulating Strip . . . . .                                   | 149-39   |          | Iron Core (Used on all I.F. and Discriminator Transf.)       |
| 83-1503                     |          | Tone Arm Insulating Strip. . . . .                           | 149-64   |          | Tuning Core. . . . .   |
| 85-417                      |          | Band Switch (use S-14168). . . . .                           | 188-34   |          | Retaining Ring . . . . .                                     |
| 93-2                        |          | .016 x .134 x 1/4" Brass Washer. . . . .                     | 202-506  |          | F.M. Instruction Book. . . . .                               |
| 93-94                       |          | Bakelite Shoulder Washer . . . . .                           | 202-553  |          | Instruction Book . . . . .                                   |
|                             |          |  | 212-3    |          | Selenium Rectifier (or 212-4). . . . .                       |
|                             |          |  | S-13977  | LI       | Wavemagnet Assembly - Type 29D . . . . .                     |
|                             |          |  | S-14128  |          | Cabinet Back, A.C. Plug and Cord Assembly (7H820). . . . .   |
|                             |          |  | S-14168  |          | Bandswitch and Terminal Strip Assembly . . . . .             |
|                             |          |  | S-14358  |          | Wavemagnet Cable Assembly. . . . .                           |
|                             |          |  | S-14562  |          | Cabinet Back, A.C. Plug and Cord Assembly (7H820W) . . . . . |